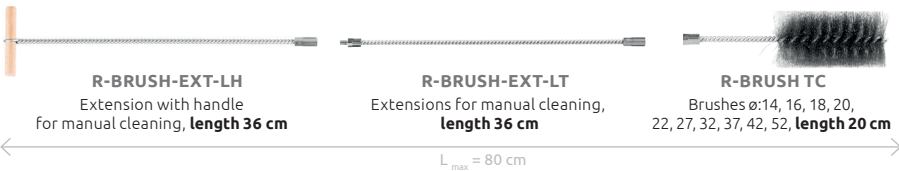
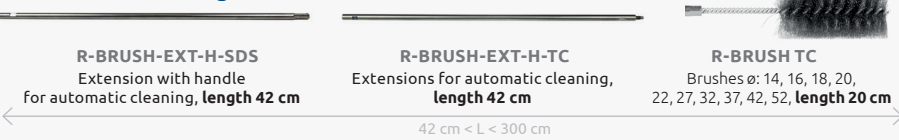


1 CLEANING BRUSH SYSTEM

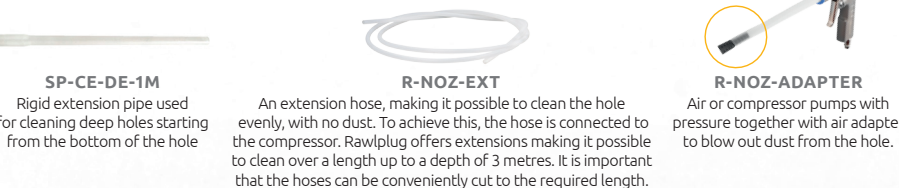
Manual cleaning



Automatic cleaning



2 AIR CLEANING SYSTEM



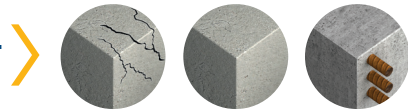
3 RESIN DOSING SYSTEM



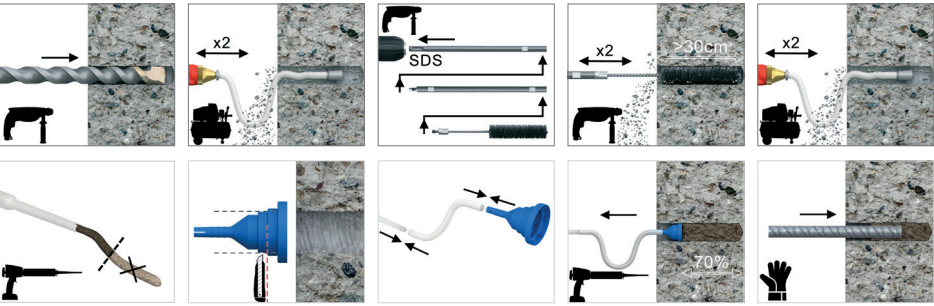
Product Code	Suitable for	Drill diameter [mm]	Quantity [pcs]		Weight [kg]	
			Box	Outer	Box	Outer
R-BRUSH-EXT-LH	Extension with handle for manual cleaning	-	1	1	0.15	0.15
R-BRUSH-EXT-LT	Extensions for manual cleaning	-	1	1	0.15	0.15
R-BRUSH-EXT-H-TC	Extensions for automatic cleaning	-	1	10	0.35	3.5
R-BRUSH-EXT-H-SDS	Extension with handle for automatic cleaning	-	1	10	0.35	3.5
SP-CE-ED-1M	Extension for mixer nozzle 1000 mm	-	10	10	0.02	0.02
R-NOZ-EXT-200	Extension for mixer nozzle 200 mm	-	50	1000	0.20	4.0
R-NOZ-EXT-300	Extension for mixer nozzle 300 mm	-	50	1000	0.30	6.0
R-NOZ-EXT-3000	Extension for mixer nozzle 3000 mm	-	1	1	0.06	0.06
R-NOZ-P-16-26	Piston plug	16-26	10	500	-	-
R-NOZ-P-28-50	Piston plug	28-50	10	500	-	-
R-NOZ-ADAPTER-14	Air adapter	14-20	1	1	0.02	0.02
R-NOZ-ADAPTER-22	Air adapter	22-26	1	1	0.02	0.02
R-NOZ-ADAPTER-28	Air adapter	28-50	1	1	0.02	0.02

SUBSTRATE MATERIAL

Cracked concrete, non-cracked concrete, reinforced concrete



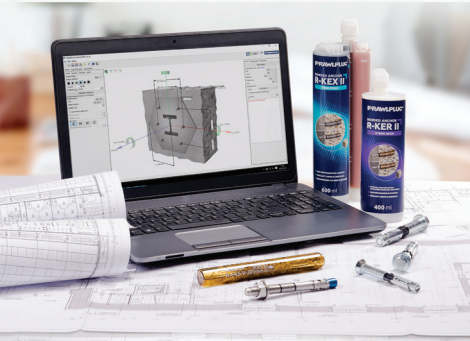
INSTALLATION GUIDE



1. Drill the hole to the required diameter and depth using a rotary hammer drilling machine.
2. Clean the hole with compressed air starting from the drill hole bottom, blow the hole at least twice by compressed air minimum 6 bar.
3. Clean the hole with manual brushes or automatic brushes - brush out the hole at least twice, for deep holes, use the extension.
4. Blow the hole at least twice by compressed air minimum 6 bar.
5. Dispense to waste until even colour is obtained (min. 10 cm).
6. Adjust (cut) the piston plug to the drilled diameter.
7. Plug the piston plug into the extension and enter to the bottom of hole.
8. Start injecting resin, piston plug will slide out of the hole (piston action) as the hole is filled to 70% of its depth.
9. Immediately insert the rebar, slowly and with slight twisting motion.
10. Leave the fixing undisturbed until the curing time elapses.

TOOLS  
FOR DESIGNERS

Our original application dedicated to engineers and designers. This simple, yet multifunctional tool enables you to run calculations and develop designs using Rawlplug fixings.



DEEP  
ANCHOR SYSTEM

” DELIVERING SOLUTIONS FOR DEEP  
EMBEDMENT INSTALLATIONS

For professional applications



HIGHLIGHTS

Trust & Innovation

www.rawlplug.co.uk





## ”FOR PROFESSIONAL APPLICATIONS

Deep anchoring  
even up to 2,5 m



### DEEP ANCHOR SYSTEM

The use of R-KEX-II, R-KER-II or R-KER resin in professional applications up to 2.5 m deep requires the use of the following systems:

#### 1 Cleaning brush system

- Manual hand brushes and brushes automatically handled for deep cleaning
- Extensions for manual or automatic cleaning

#### 2 Air Cleaning system

In the case of deep anchoring, when we need to perform the cleaning of the hole with air at greater depths, extensions and hoses will be indispensable. Cleaning system:

- Rigid extension tube or
- Extensions hose with air adapter

#### 3 Resin dosing system

Resin dosing system includes the following elements:

- Mixers dedicated to every type of resin
- Extension nozzles for resin injection rigid extension tube and extension hose
- Piston Plug, dosing plugs

[www.rawlplug.co.uk](http://www.rawlplug.co.uk)

## Delivering the parameters of a safety fixing



The AKUDOSE cordless dispenser makes it easy to inject the correct quantity of required resin for deep anchoring applications

The flexible hose allows both **cleaning as well as resin dosing** in deep drill holes

Brushes and extensions are made of high quality steel, which guarantees their **long-term operation** in difficult conditions

Full control over the degree to which the hole is filled with resin

The ability to combine several elements and achieve the **required anchoring depth**

Cleaning of holes from output and dust

### DEEP ANCHOR

is used mainly when new reinforced concrete structures need to be connected to an existing structure, or when existing structures are reinforced or upgraded. Such situations may occur when connecting slabs and beams, reinforcing joints and walls, adding stairs, or building balconies and brackets. Depending on the type of the existing structure and its reinforcement, we can distinguish between adhesive bonded rebars and lap splicing. These applications require special accessories to dose the resin properly and ensure safe anchoring. Rawlplug provides you with a full system ready to support you even in the most challenging circumstances on-site.

### OUR SYSTEM

designed with professionals in mind, includes the following elements:

- accessories necessary for cleaning deep holes. There are 2 types of accessories included, depending on the cleaning method. Brushes dedicated for deep anchoring or extensions and hoses dedicated for cleaning with compressed air.
- accessories needed for dosing the resin in deep holes. Dosing stage for deep anchoring - includes the use of extensions or hoses for deep resin dosing and piston plug.

### SUPPORT FOR CONTRACTOR

in any application related to deep anchoring. System dedicated for cleaning and deep dosing of the resin - enables proper cleaning of deep holes and filling holes in accordance with the approval. When dosing the resin, the extension tube ensures homogeneity and proper mixing of the components with no air bubbles.

Ensures thorough **cleaning of the drill hole** for optimum load performance

Accurate cleaning of the drill hole allows:

- the required load to be achieved
- maximum adhesion of resin to the drill hole
- ensures adequate adhesion

