

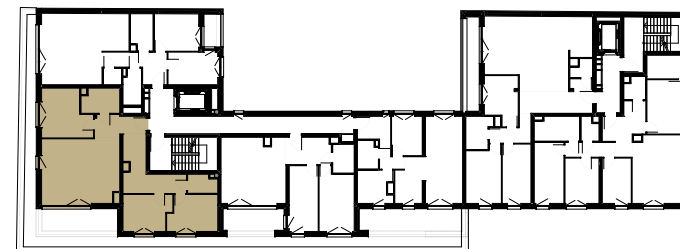
FLAT: 6_A-02

FLOOR: 6

ROOMS: 4

107.2 M²

JN190



Flat number 6_A-02

Floor 6

4 rooms

1	Hall	7.4 m ²
2	Living Room With Kitchenette	35.1 m ²
3	Bathroom	6.5 m ²
4	Bathroom	3.7 m ²
5	Corridor	14.6 m ²
6	Bedroom	12 m ²
7	Bedroom	12.3 m ²
8	Bedroom	15.6 m ²

Usable area 107.2 m²

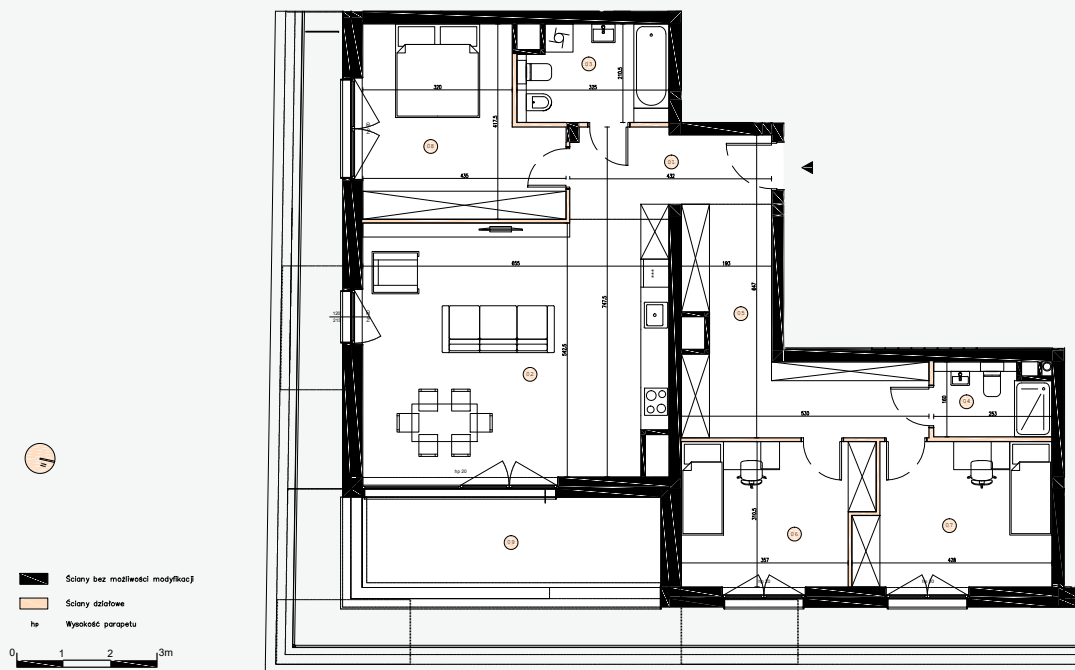
9 Terrace 42.4 m²

SALES OFFICE

ul. Jedności Narodowej 192

50-302 Wrocław

tel.: +48 695 224 081

email: sprzedaz@jn190.pl

1. The dimensions of the rooms, the location of sanitary utensils and others are based on the construction design. In the course of construction, there may be differences in relation to the condition resulting from the design, resulting from the specificity of construction works.
2. The area is calculated in the light of the vertical partitions in the finished condition, taking into account 1 cm plaster and cladding, at the floor level without taking into account the skirting boards, thresholds, etc. Dimensions are given unfinished.
3. The usable area of premises and rooms is determined on the basis of the Regulation of the Minister of Transport, Construction and Maritime Economy of 25 April 2012 on the detailed scope and form of the construction design and taking into account the content of the Polish Standard PN-ISO 9836. The usable area includes the surface of the elements suitable for disassembly and demolition (pipes, ducts and partitions), but does not take into account the area of openings for doors and windows and niches in closing elements.